



WORKSHOP EQUIPMENT

FOR THE HEAVY VEHICLE INDUSTRY

LEVANTA.CO.NZ

09 889 6545

Levanta

The best equipment from across the globe, right to your workshop

Contents

Mobile Column Lifts	4
4 Post Truck Hoists	8
Knuckle Lifts	10
InGround Truck & Bus Lifts	12
Heavy Vehicle Wheel Alignment	14
Wheel Balancers & Tyre Changers	16
ESCO Workshop Gear	18
BrakeMate®	19
Hydraulic Jacks	20
Hydraulic Jack Accessories	22
Hydraulic Transmission Jacks	22
Hydraulic Workshop Presses	23
Jacking Beams	24
Pit Jacks	25
Wheel Trolleys	26
Teknox Parts Washers	27
Mobile Lubrication Oil Units	27
Oil Tanks	28
Lubrication Equipment	28
Roller Brake Testers	32
Play Detectors	36
Prefabricated Service Pits	37
Turnkey Workshop Solutions	38
Completed Workshop Fitouts	39

Looking for the right vehicle workshop supplier for your business?

You've found it at Levanta.

Levanta specialise in the supply of cutting-edge yet cost effective workshop solutions, to deliver the very best workshop fitouts and workshop equipment available.

With over 20 years' experience in supplying the Australian and New Zealand heavy vehicle market, we understand your need for workshop equipment that meets the highest standards for engineering and reliability. It's why we choose to supply only top quality products from the world's best manufacturers.

This philosophy has helped Levanta become the trusted name in workshop equipment and workshop fitouts throughout New Zealand.

Our sales and service network reaches across both the North and South Islands of New Zealand. This comprehensive supply network ensures we can deliver the fast response and quality service that vehicle workshops demand. And it's this strong service focus that will benefit your business as our partner.




Mobile Column Lifts

LiftMax LM65W - 6.5T Wireless

Innovation and quality have always been of paramount importance to the LiftMax brand. The new LM series of wireless heavy-duty electro/hydraulic mobile columns have been designed to increase potential lifting solutions for workshops servicing both commercial or public sector vehicles. Each LM65 column has a full function control with 7" colour LCD touchscreen.

The operator can control the lift from any column and determine whether the lifting configuration is a full set, single axle (pair) or a single column. With 10 wireless channels to choose from and capabilities for cable connection as a backup, the LM65W is the most versatile, capable & reliable mobile lifting solutions on the market.

The LM65 lifting forks are fully adjustable and capable of safely lifting wheel diameters from 60 to 135 cm (24" to 53").

Product of Italy 



LIFTMAX[®]
SUPPORT. EVERYTIME.

Tech Specs	LM65W
Capacity	6.5T
Max lifting height	1,725 mm
Lifting speed	2 cm/s
Column Dimension	1,217(L)*1, 150(W)*2,400(H) mm
Weight (per column)	590 kg
Power	240V (supply for charger)

Available Product Accessories



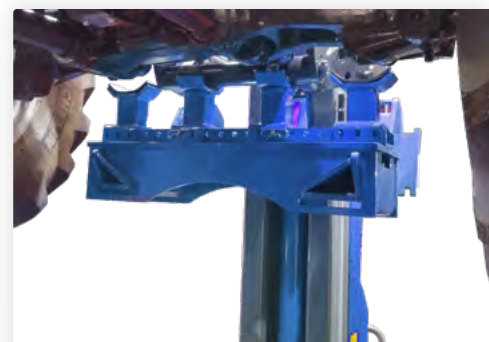
Trailer Beam

Enable a set of Mobile Columns to lift trailers, connected or unconnected.



Protection Covers

Rain, hail or shine, protect your LM65W Mobile Columns from the elements.



Agricultural Adapters

Convert the lifting arms to be compatible with agricultural machinery.



LiftMax LM86W – 8.6T Wireless

Mobile column lifts offer you a convenient and flexible lifting option for heavy vehicles Italian-made with high 8.6T capacity


Their exceptional mobility means column lifts don't take up a fixed space in your workshop and can be easily stored away when not in use. Column lifts allow you to do more with your existing workshop space than alternative lifting option such as fixed four post hoists.

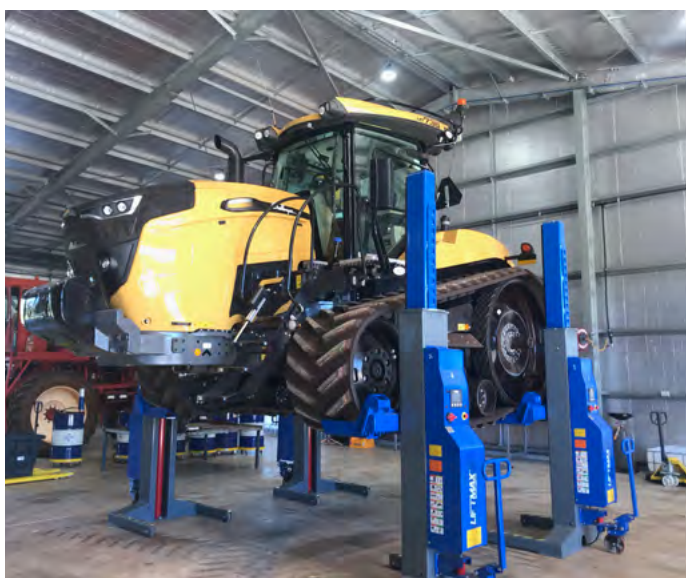
LM86W's wireless configuration means there's no power cables for your technicians to trip over while in your workshop. Heavy duty battery power means there's also no need for 3 phase power supply for your column lifts.

Product Features:

The fully adjustable lifting forks can safely lift wheel diameters from 600 to 1,350 mm (24" to 53").

- User-friendly 7" colour LCD touch screen display
- Premium quality gel cell storage batteries, which can quickly and easily be recharged using the built-in 240V 10-amp chargers.

Product of Italy 



LIFTMAX[®]
SUPPORT. EVERYTIME.

Tech Specs	LM86W
Capacity	8.6T
Max lifting height	1,700mm
Lifting speed	2 cm/s
Column Dimension	1,374(L)*1,150(W)*2,280(H) mm
Weight (per column)	750 kg
Power	240V (supply for charger)

Techlift TL75W- 7.5T Wireless

With a lift capacity of up to 7,500kgs per column, Techlift's heavy duty mobile column lifts are engineered to be robust, versatile and easy to manoeuvre.

Thanks to their wireless design, TL75W mobile column lifts give you the ultimate workshop flexibility and manoeuvrability. You don't have to waste time connecting power cables, and there's less chance of tripping hazards for your technicians.

TL75W columns are extremely compact and easy to store, helping to keep your busy workspace clear when your column lifts aren't in use.

- 7.5t per column lift capacity
- Smooth, synchronised raising and lowering
- LCD screen display
- Advanced safety features



TECHLIFT
RUGGED. RELIABLE. RESPONSIVE.

Tech Specs	TL75W
Capacity	7.5T
Max lifting height	1,700mm
Lifting speed	1.8 cm/s
Column Dimension	1,300(L)*1, 100(W)*2,300(H) mm
Weight (per column)	680 kg
Power	240V (supply for charger)



LM80S LiftMax Axle Stand

Axle stand to compliment the use of column lifts. Pin locking mechanism, with screw adjustment of pad height.

Tech Specs	LM80S
Capacity	8T
Min height	1,096 mm
Max height	1,759 mm
Adjustable Positions	11 Pin holes
Wheels	Swivel castors
Mechanism	Pin locking with screw fine adjustment

4 Post Truck Hoists

Jager 13.6T 4 Post Hoist

Generous 13.6T lifting capacity

This versatile, heavy duty 4 post lift is engineered to accommodate trucks and built to last with upgrades to safety, durability and productivity. With its generous 13.6t lifting capacity, this hard working truck lift makes light work out of your heavy lifting.

The JFL-13 series truck hoist features:

- Self chocking approach ramps in the rear
- Single point latch release system
- Multi-position lock components
- All hydraulics and mechanical lifting components concealed under runway
- Internal airline connections
- Textured surface on runways and ramps
- Includes jacking beam rails
- Adjustable width between runways



Pictured: JFL-13 with optional drive through ramps

Tech Specs

JFL-13

Lifting capacity	13.6T
Platform Length 8200mm	8200mm
Maximum Wheelbase	7798mm
Lifting Height	1727mm
Overall Length	9655mm
Overall Width	3780mm
Width Inside Columns	3353mm
Overall Height	2,150mm
Runway Width	610mm
Width Between Runways	1041 -1219mm
Rise Time ~	105 seconds
Power	415V 3 phase

JAGER[®]

Available Product Accessories



Jacking Beam

Air hydraulic twin ram jacking beam, with an automatic mechanical safety lock.



Lighting kit

Optional LED lighting kit provides additional light to the underside of the vehicle whilst being serviced.



Drive through ramps

Optional drive through ramp system allows you to install the hoist in a workbay where you can drive the vehicle on and off the hoist.



Jager JFL Series 16-25T 4 Post Hoists

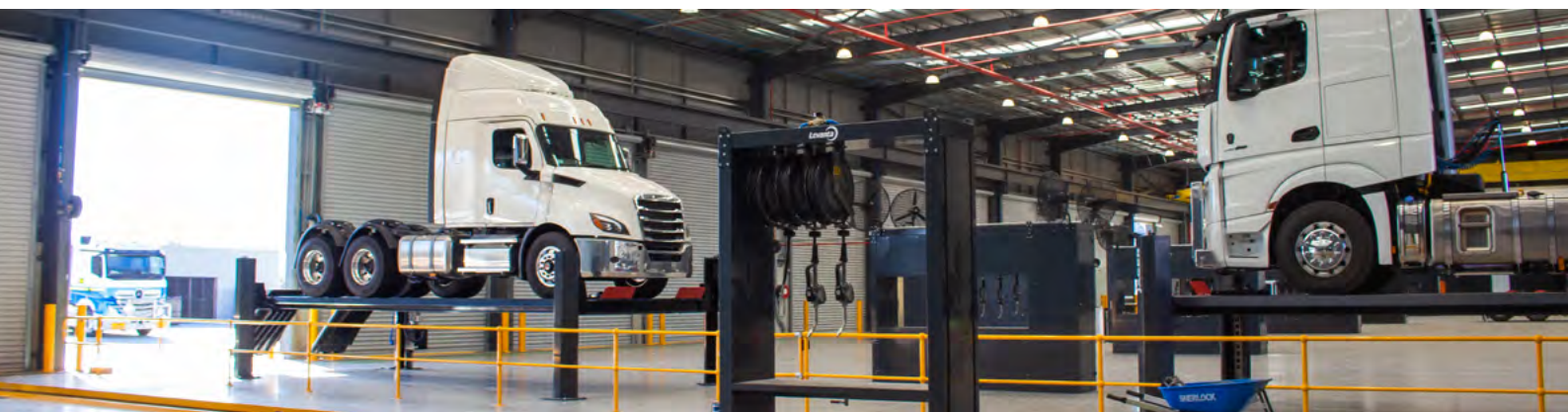
General Features:

- Innovative design of columns without longitudinal welds
- Electro-hydraulic lifting system operated over a special double piston cylinder
- Platform locking system operated automatically by electromagnets
- In addition to safety locking system, also incorporates a "slack cable" safety lock whereby the lock will activate in the event of a cable snap/breakage
- Hydraulic cylinder with control valve of lowering speed
- Safety valve against overpressure of the hydraulic system
- Motor equipped with thermal detector against overheating
- Pushbuttons at 24V, type "dead man", separated UP & DOWN buttons and ON/OFF switch lockable by a padlock
- Special protection on pulleys zone
- Smooth platforms
- Upper height limit switch
- Automatic release of safety wedges by pushing DOWN button
- International patent on safety and lifting system
- No compressed air required to operate locks



Product of Spain 🇪🇸

Tech Specs	JFL-160	JFL-180	JFL-250
Load Capacity	16T	18T	25T
Platforms width	810 mm	810 mm	810 mm
Width between posts	3,500 mm	3,500 mm	3,500 mm
Distance between platforms	1,000 mm	1,000 mm	1,000 mm
Drive on height	240 mm	240 mm	240 mm
Lifting height	1,540 mm	1,540 mm	1,540 mm
Overall length	9,576 mm	9,576 mm	9,576 mm
Overall width	4,269 mm	4,269 mm	4,269 mm
Power	415V 3 phase	415V 3 phase	415V 3 phase



Knuckle Lifts

With a lift capacity ranging from 20t to 54T these massive heavy duty knuckle lifts are perfectly suited for the bigger side of lifting. Ideal for trucks, buses and any other large capacity vehicle, these models are available in surface or flush mount. The KAR range is an electro-hydraulic pantograph lift with vertical raising, free of interference on the floor and ideal for heavy vehicle maintenance and lifting.

Designed with a strong and compact frame, the vehicle lift guarantees a perfect stability on the runways, providing functionality, safety and consistent reliability. No base and no mechanical connection on ground, these are the main characteristics of the lift structure which grants maximum freedom of movement under the lane and on the front area.

Versions:

- Flush or surface mount versions available
- Single, dual or triple platform options to take articulated or extra long vehicles



Safety Features of the KAR Knuckle Truck Lift System


- The layout of the buttons on the control console is "deadman", simple and intuitive.
- Mechanical locks on each lifting cylinder
- Burst valve on each lifting slave cylinder
- Qty 5 max. overpressure valves
- Photo sensors for runways leveling control
- Acoustic warning and by-pass key when lift reaches 500 mm. from collapsed position
- Low voltage commands

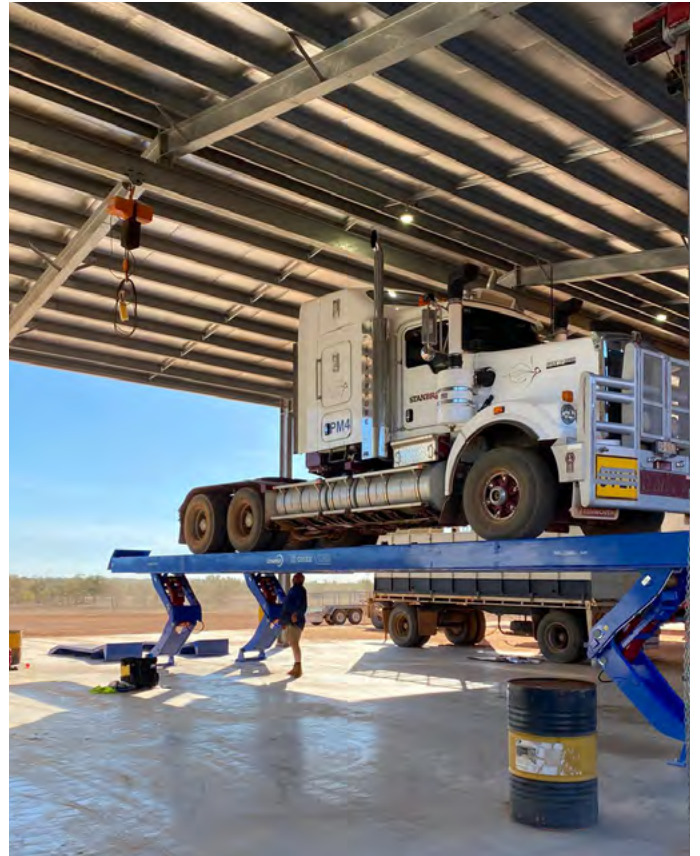
Main Features:

Maximum freedom of movement for the operator while working under the runway and in front of the lift because of the particular structure of the legs and of the lift design, as well as no base and no mechanical connection on the floor.

Electronic balance system with automatic levelling.

Designed to accommodate extra jacking beams if required, the embossed anti slip finish on all drive on platform surfaces ensures maximum safety for lifting/lowering operations.

Product of Italy 



Tech Specs	KAR200	KAR250	KAR350	KAR540
Lifting Capacity	20T	25T	35T	54T
Lifting Height	1,760 mm	1,760 mm	1,790 mm	1,790 mm
Runway Length (options)	9,000 mm / 10,000 mm/ 11,000 mm	9,000 mm / 10,000 mm / 11,000 mm / 14,500 mm	9,000 mm / 10,000 mm / 11,000 mm / 14, 500 mm	9,000 mm / 10,000 mm / 11,000 mm / 14, 500 mm
Collapsed Height	360 mm	360 mm	390 mm	390 mm
Air Operated	4 - 8 Bar	4 - 8 Bar	4 - 8 Bar	4 - 8 Bar
Oil Pressure	220 Bar	220 Bar	220 Bar	220 Bar
Oil Capacity	50 l	50 l	50 l	50 l
Gross Weight	7,000 kg	7,000 kg	8,000 kg	8,000 kg
Lifting Time	70 seconds	70 seconds	80 seconds	80 seconds
Power	415V 3PH 7.5KW	415V 3PH 7.5KW	415V 3PH 7.5KW	415V 3PH 7.5KW



InGround Truck & Bus Lifts

AC Hydraulic has departed from the traditional understanding of inground lifts and created the lift of the future.

The lift is delivered ready for use in steel cassettes with 2, 3, 4 or 5 lifting rams. The lift has a capacity from 30-75 tonnes.

A level workshop floor and optimum mobility offers the best possible working conditions and improved efficiency, safety and profitability.

Supplied standard with telescopic lifting rams to increase lifting heights and at the same time reducing construction depth.

The result is a simple installation at lower costs.

Product of Denmark 





Plug & Play

The low construction depth reduces costs considerably compared to traditional inground lifts.



Easy Connection

The cable is connected to the steering box and hereafter the lift is fully operational



Touch Screen Control

User friendly remote control offers information about the operation of the lift, ram positions as well as on safety and maintenance.



Safety & Stability

Square lifting rams ensure maximum stability. 2 independent hydraulic circuits in each lifting ram offer optimum safety: One circuit will hold the entire load if necessary.



Always The Optimum Working Height

The cross beams can be stored at floor level in full pit length. The lift is particularly suitable for workshops servicing many different vehicle types.



Robust Rolling Cover with 7t Capacity

Cross beams and rolling cover are always level with the workshop floor in the full pit length no matter the position of the cross beams.

Tech Specs	UL2	UL3	UL4	UL5
Lifting Capacity	30T	45T	60T	75T
Stroke	1,900 mm	1,900 mm	1,900 mm	1,900 mm
Rams / Moveable	2 / 1	3 / 2	4 / 3	5 / 4
Cassette Length	8,700 mm	14,340 mm	17,400 mm	20,000 mm
Cassette Width	1,030 mm	1,030 mm	1,030 mm	1,030 mm
Lifting Points Distance	2,500 - 7,500 mm	1,300 - 12,800 mm	1,300 - 16,500 mm	1,300 - 19,025 mm
Speed Up/Down	80 Seconds	80 Seconds	80 Seconds	80 Seconds
Power Requirements	415V 3PH 12kW	415V 3PH 18kW	415V 3PH 24 kW	415V 3PH 30kW
Liter Oil / Ram	25 l	25 l	25 l	25 l
Weight	4,600 kg	7,000 kg	9,000 kg	11,000 kg

Heavy Vehicle Wheel Alignment



JOSAM



Cam Aligner

Camera technology for fast & accurate measurement

This compact wheel alignment system enables truck and bus workshops, as well as tyre service centres, to offer wheel alignment services quickly and accurately.

The JOSAM cam-aligner wheel alignment system uses the centerline principle to determine the position of axles and individual wheels in relation to the centerline of the vehicle.

The system is designed to measure commercial vehicles such as trucks, trailers, buses and light commercial vehicles. Thanks to the scalability of the system it is also possible to obtain functions for ACC (Adaptive Cruise Control) calibration & Frame check.



Wheel angles like

- toe, steering box position, camber, out of square, parallelism and axle offset
- caster, KPI, Toe Out On Turns and max turn are measured using our patented camera technology with the chassis center line of the vehicle as reference.

Enabled by the unique rolling method, toe and camber measurements may be taken while the vehicle is in driving position. No lifting of the axles with run-out compensation is required, alternatively the system can also be operated with standard run-out procedure.

Wireless technology is used for transmitting data between measuring units and the computer. The computer software guides the user through the measuring process and prints out measurement reports of values, before and after alignment.

Product of Sweden 🇸🇪



I-Track II

The world's fastest and most advanced wheel aligner for heavy vehicles

The i-track II is JOSAM's fastest wheel alignment system, and now more efficient than ever. It can measure a Bx2 truck in less than 4 minutes! I-track's speed and cutting-edge design will streamline your workflow and increase your profitability and productivity. Ideal for high turnover alignment shops and bus wheel alignment workshops.

Product of Sweden 🇸🇪



Laser AM

Accurate measuring system for wheels, axles and frames

Laser AM enables you to grow your business through wheel, axle and frame alignment for a low investment cost.

With this manually operated equipment, you can measure the wheel angles of trucks, coaches, semi-trailers, full-trailers and other heavy vehicles. It also allows for checking the vehicle's chassis or other frame constructions in a simple way.

Product of Sweden 🇸🇪



Wheel Balancers & Tyre Changers



T650

For trucks, vans, and cars with manual input of wheel diameter and distance. Includes pneumatic wheel lifter.

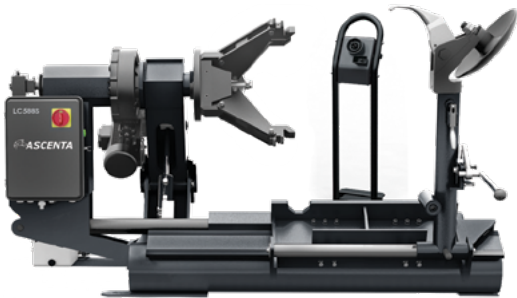
Tech Specs	T650
Shaft Diameter	40 mm
Rim Diameter	8 - 28"
Rim Width	1.5 - 20"
Pneumatic Air Supply Pressure	6 ÷ 15 BAR
Noise Level When Running	> 70 dB (A)
Machine Weight	150 kg
Supply Voltage	240V 1PH



B700

For trucks, vans, and cars with automatic input of wheel diameter and distance. Includes pneumatic wheel lifter.

Tech Specs	B700
Shaft Diameter	46 mm
Rim Diameter	7 - 30"
Rim Width	1.5 - 22"
Pneumatic Air Supply Pressure	6 ÷ 15 BAR
Noise Level When Running	> 70 dB (A)
Machine Weight	150 kg
Supply Voltage	240V 1PH



ATTC26

Entry level truck tyre changing machine with cabled remote control.

Tech Specs	ATTC26
Rim Diameter	14 - 26"
Rim Width	1000 mm
Max. Wheel Diameter	965 mm (30")
Net Weight	561 Kg
Gross Weight	739 Kg
Supply Voltage	240V 1PH 15A



F240A

Compact truck tyre changing machine with swing arm control console.

Tech Specs	F240A
Handles rims from	14 - 26"
Max. wheel diameter	1400 mm
Max. wheel width	695 mm (30")
Max. wheel weight	700 kg
Working pressure	130 BAR
Noise level when running	< 70 dB (A)
Machine weight	500 Kg
Supply voltage	240V 1PH 15A



F560

Universal truck & light agricultural tyre changer with cabled remote control.

Tech Specs	F560
Handles rims from	14" - 56"
Max. wheel diameter	2300 mm
Max. wheel width	1065 mm
Max. wheel weight	1000 kg
Working pressure	130 BAR
Noise level when running	< 70 dB (A)
Machine weight	762 Kg
Supply voltage	415V 3 phase



F560A Special Y

Universal truck & light agricultural tyre changer with swing arm control console.

Tech Specs	F560A Special Y
Handles rims from	14" - 56"
Max. wheel diameter	2,500 mm
Max. wheel width	1,220 mm
Max. wheel weight	1,300 kg
Working pressure	170 BAR
Noise level when running	< 70 dB (A)
Machine weight	1,200 kg
Supply voltage	415V 3 phase



F565

Truck, heavy agricultural & earthmoving tyre changer with fully automatic tool head and wireless control.

Tech Specs	F565
Handles rims from	14" - 50" / 60"
Max. wheel diameter	3000 mm
Max. wheel width	1800 mm
Max. wheel weight	3000 kg
Working pressure	10 BAR
Noise level when running	< 70 dB (A)
Machine weight	2200 kg
Supply voltage	415V 3 phase

ESCO Workshop Gear

ESCO is the world leader in manufacturing and supplying quality tyre service equipment for the automotive, agricultural, commercial truck, off-the-road (OTR), and mining markets.

ESCO produces a wide range of tyre service/handling products ranging from: heavy duty bead breakers; hydraulic rams; air hydraulic pumps; heavy duty jacks and stands; tyre demounting and mounting tools; tyre wheel dollies, torque wrenches, and many other quality tyre service equipment to better aid in safely and efficiently servicing tyres/wheels.

Yellow jackedit 2.2T transmission jack

Model No. 10812

Lifting Height: 254mm-889mm

Unit Weight: 158 kg

Hydraulic System is protected with a safety overload system. Wide chassis design provides for maximum jack stability. Fully adjustable universal saddle, brackets and chain sling.



ESCO pro series 20T "Shorty" air hydraulic bottle jack

Model No. 10382

Lifting Height: 181mm-320mm

Unit Weight: 15 kg

Fully welded cylinder and frame provide superior strength and extended service life. An extra thick jack base provides exceptional support and stability in severe conditions. Chrome-plated piston for extra rust and corrosion resistance.



"Combi" bead breaker kit – 5 quart hydraulic air pump

Model No. 10202

Includes the following items:

- #10101 – "Combi" Bead Breaker Tool
- #10592 – 5 Quart Hydraulic Air Pump
- #10604 – 8' Hose assembly with Hose Coupler
- #10601K – 6 Whip-Hose, Air Reducer



ESCO pro series 30T air hydraulic bottle jack

Model No. 10383

Lifting Height: 276mm-508mm

Unit Weight: 28 kg

Fully welded cylinder and frame provide superior strength and extended service life. Design to be operated using air or manually with included two-piece lifting or lowering handle. Chrome-plated piston for extra rust and corrosion resistance.



Wheel Chocks (10T/20T/60T)

Model No's. 12591/92/93

Rugged/Lightweight Weather resistant Polyurethane Wheel Chocks

12591 & 92 suit tyre sizes up to 35", 93 is suitable for tyre sizes ranging from 46" - 65"

Built-in carrying handle and holes for installation of ropes, chains, and/or mounting brackets.



ESCO pro series 20T air hydraulic bottle jack

Model No. 10381

Lifting Height: 254mm-508mm

Unit Weight: 18 kg

Fully welded cylinder and frame provide superior strength and extended service life. Extra thick jack base provides exceptional support and stability in severe conditions. With a Double spring design for controlled and safe pressure release.



BrakeMate®

Brake Maintenance System

BrakeMate is designed to protect workers from musculoskeletal injuries by removing the requirement for manual lifting. Many mechanics have suffered back injuries through manually handling rotor and hub assemblies weighing up to 70kg. Not only are these injuries painful for workers but they also cause financial pain for employers through lost time and Work Cover claims. Not all injuries are immediately apparent, either:

Accumulative damage to the spine and joints over many years often leaves older workers with aches and pains that can prevent them from continuing in a hands-on role through to retirement age.

With BrakeMate mechanics no longer have to call for assistance with the lifting of heavy components. The whole process is a one-person operation and servicing times are greatly reduced, by more than 50 per cent in many cases. These labour savings mean the purchase costs of the BrakeMate system can be recovered over a short period of time.

Key Benefits:

- Eliminate manual lifting of Calliper, Hub and Rotor
- Reduce the risk of back injury
- Ideal work height
- Reduce service time
- Specially designed for bus, truck and trailer maintenance needs
- Reduce maintenance times and costs
- Easy to use and offers major OH&S benefits
- Australian designed and manufactured
- Drum brake adapter option available



— • • • • • —
PRODUCT OF AUSTRALIA



Hydraulic Jacks



DK50HLQ

Ideal for trucks, agricultural machinery and contractor's machines

Made with a wide and robust frame of high strength steel, this unit is safe and ergonomically designed for ease of use.



DK100Q

Heavy Duty Hydraulic Jack

With a lift capacity up to 10t and the extremely low minimum height of 150mm, this low clearance hydraulic jack is ideal agricultural machinery and contractor's machinery.



B25-2

Portable Air Hydraulic Jack

Low minimum height of only 160mm and low weight of only 28 kg. Handy design - no loose tubes, handles or valves.



25-2

Versatile 2-stage jack for buses and trucks

Designed for heavy-duty, intensive commercial use. Hard chromium plated piston rod for long life. Built-in safety overload valve.



25-1 H

Single stage air hydraulic jack

For agricultural and contractors' machinery, trailers and other high clearance applications



40-4

Perfect for even the lowest vehicles

The 40-4 is built for intense commercial use and delivers extremely stable heavy duty lifting.

Tech Specs	DK50HLQ	DK100Q	B25-2	25-2	25-1H	40-4
Capacity	5T	10T	25 / 10T	25 / 10T	25T	40 / 27 / 16 / 10T
Min. Height	140 mm	150 mm	160 mm	180 mm	360 mm	100 mm
Max. Height	975 mm	585 mm	235 / 320 mm	275 / 380 mm	610 mm	145 / 180 / 230 / 275 mm
Frame Length	1,290 mm	805 mm	535 mm	770 mm	820 mm	630 mm
Handle Length	1,200 mm	1,200 mm	550 mm	1,160 mm	1,160 mm	1,160 mm
Width	265 mm	530 mm	225 mm	160 mm	230 mm	235 mm
Width (with wheels)	-	-	290 mm	305 mm	310 mm	255 mm
Air supply	-	-	9 – 12 bar	9 – 10 bar	9 – 10 bar	6 – 10 bar
Air Consumption	-	-	350 l/min	350 l/min	350 l/min	215 l/min
Weight	170 kg	118 kg	28 kg	60 kg	71 kg	54 kg

10 YEAR
3 YEAR UNLIMITED
WARRANTY



50-2

Designed for heavy-duty, intensive commercial use

Single stage jack for agricultural and contractors' machinery, trailers and other high clearance applications



50-3

3-stage air hydraulic jack

For low buses and other low clearance vehicles. Designed for heavy duty, intensive commercial use.



65-1

Air hydraulic jack for heavy contractors' machinery

Designed for heavy-duty, intensive commercial use, this jack has a minimum height of 245 mm



65-1 H

Designed for heavy-duty, intensive commercial use

Air hydraulic jack for heavy duty applications with high clearance.



150-1 L

High tonnage hydraulic mining jack

Low profile Heavy duty jack, designed for the mining and construction industry.



150-1 H

High tonnage hydraulic mining jack

High lift Heavy duty jack, designed for the mining and construction industry.

Tech Specs	50-2	50-3	65-1	65-1H	150-1L	150-1H
Capacity	50 / 25T	50 / 25 / 10T	65T	65T	150T	150T
Min. Height	220 mm	150 mm	245 mm	425 mm	460 mm	970 mm
Max. Height	340 / 450 mm	210 / 265 / 335 mm	380 mm	725 mm	595 mm	1,620 mm
Frame Length	810 mm	810 mm	825 mm	980 mm	1,300 mm	1,735 mm
Handle Length	1,160 mm	1,160 mm	1,160 mm	1,160 mm	1,360 mm	1,360 mm
Width	200 mm	200 mm	200 mm	300 mm	350 mm	575 mm
Width (with wheels)	315 mm	310 mm	380 mm	380 mm	625 mm	715 mm
Air supply	9 – 10 bar	9 – 10 bar	9 – 10 bar	9 – 10 bar	8 - 12 bar	8 - 12 bar
Air Consumption	350 l/min	350 l/min	350 l/min	350 l/min	1,200 l/min	1,200 l/min
Weight	80 kg	67 kg	95 kg	138 kg	355 kg	575 kg

Hydraulic Jack Accessories listed on the next page

Available Hydraulic Jack Accessories

10 YEAR
3 YEAR UNLIMITED
WARRANTY



SBB

Transport locking device and wall bracket for B25-2

Safe and secure storage in service vans as well in the workshop.



F250

Extension

- Increase the maximum height by 250 mm
- *Cannot be used together with other extensions*



FW

Jack saddle

- Capacity: 10T
- 145mm high
- Suitable for lifting under bolts, differential gear etc.



FW1

V-saddle

- Capacity: 10T
- For lifting under different types of axles

Hydraulic Transmission Jack

10 YEAR
3 YEAR UNLIMITED
WARRANTY



VLT12

Hydraulic transmission jack with telescopic cylinder

- Especially for lifting heavy truck transmissions
- Ideal for workshop pits due to low minimum height and long stroke
- Pedal operated pump with built-in quick lift leaving both hands free for working
- Precise adjustment for positioning of transmission
- Hand operated dead man's release for optimum safety whilst lowering
- Galvanised support saddle and base frame
- Built-in safety overload valve
- Sturdy swivel castors (2 lockable) for optimum stability and manoeuvrability

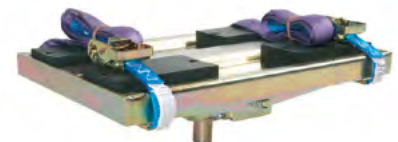
Product of Denmark 

Tech Specs VLT12

Capacity	1.2T
Min. height	905 mm
Max. height	1920 mm
Width	720mm
Weight	70 kg
Wheel diameter	125 mm

AS3

Gearbox saddle



- Capacity: 1T
- Dimension: 542x385x110 mm
- 10° tilt in all directions for accurate dismantling and re-mounting of gearboxes
- Fitted with 2 straps and 4 magnetic rubber support blocks
- Fits: GD-1, GGD, GOT, VL10, VLT6 & VLT12
- Can be mounted on all Ø30 and Ø60 mm pistons



Hydraulic Workshop Presses



40T Press

Electro-hydraulic press for truck workshops and industry

Product of Denmark 🇩🇰



60T Press

Electro-hydraulic press for truck workshops and heavy industry

Product of Denmark 🇩🇰



100T Press

Electro-hydraulic press for truck workshops and heavy industry

Product of Denmark 🇩🇰

Tech Specs	P40EH1	P60EH2	P100EH2
Capacity	40T	60T	100T
Stroke	300mm	300mm	300mm
Height	1740 mm	1980 mm	2040 mm
Width with motor	1355 mm	1555 mm	1765 mm
Width between legs	850mm	1010 mm	1100 mm
Depth between legs	215 mm	259mm	325mm
Clearance	85 - 785 mm	180- 780 mm	75 -675 mm
Press speed	6,1 mm/s	10,0 mm/s	6,2 mm/s
Return speed	7,9 mm/s	14,5 mm/s	8,3 mm/s
Weight	445 kg	635 kg	1215 kg
Power Requirement	415V 3PH	415V 3PH	415V 3PH

Quality European-made Lifting Equipment
 Enjoy a 10 year warranty from AC Hydraulic
 All AC Hydraulic products are covered by a 10 year warranty on frame, chassis, and steel structures, as well as a 3 year warranty on the hydraulic system (pump and cylinder).

Available Product Accessories



Protection screens

For optimum safety

- Designed for maximum operator safety and fits all our presses
- Steel mesh with shatterproof plexi glass
- Protection screen with extreme high breakage point



PS

Set of press tools

Press plate with set of piston heads (Ø 10, 12, 15, 17, 20, 22, 25, 30 mm, adaptor and rack)

Jacking Beams

10 YEAR
3 YEAR UNLIMITED
WARRANTY

Air Hydraulic Twin Ram Jacking Beam, with an Automatic Mechanical Safety Lock

- 2 individually controlled rams offer safe and balanced lifting
- Transversely sliding rams
- Rapid and precise air hydraulic unit with high speed ram travel
- Simple modern design with control panel at ergonomic working height
- Can be made to fit all lifts due to its adjustable frame
- Frame height is adjusted and set to the customers individual specifications
- Dead man's release and safety overload valve for optimum safety

Product of Denmark 



Tech Specs	FL60-2ML	FL120-2ML	FL200-2ML
Capacity	6T	12T	20T
Stroke	200 mm	200 mm	200 mm
Min. Height	325mm	325mm	325mm
Max. Height	505 mm	505mm	505mm
Width ¹	590 -1410 mm	590 -1410 mm	590 -1410 mm
Depth	665 mm	665 mm	665 mm
Lifting points ²	200 -1160 mm	200 -1160 mm	200 -1160 mm
Air supply	8-10 bar	8-10 bar	8-10 bar
Air consumption	350 l/min	350 l/min	350 l/min
Weight	202 kg	202 kg	202 kg



Quality European-made Lifting Equipment
Enjoy a **10 year warranty** from AC Hydraulic
All AC Hydraulic products are covered by a 10 year warranty on frame, chassis, and steel structures, as well as a 3 year warranty on the hydraulic system (pump and cylinder)



Pit Jacks

10 YEAR
3 YEAR UNLIMITED
WARRANTY



Air Hydraulic Floor Pit Jack

Boasting a 15t lift capacity, this is a flexible and multi-use pit jack suitable for most lifting applications. With its traversing telescopic cylinder, it's perfect for use in both pits and under vehicle lifts.

Ideal for dismounting and re-mounting gear boxes, this flexible in-pit or under vehicle lift jack is suitable for all traditional lifting jobs. The traversing cylinder ensures a wide reach under vehicles, enabling the operator to move freely back and forth in the pit.

With a built-in manual foot pump for easy and precise judgment, plus spring loaded wheel support, this unit prevents unintended movements when lifting. A rapid and precise air hydraulic unit with high speed ram travel, this model is loaded with safety features including a dead man's release and safety overload valve for optimum protection of vehicles and operators.

Product of Denmark 🇩🇰



Tech Specs	GGD150U
Capacity	15T
Stroke	1285 mm
Min. Height	920mm
Max. Height	2205 mm
Basewidth	845mm
Basedepth	1075 mm
Cylinder diameter	Ø 60mm
Air Supply	8-10 bar
Air Consumption	350 l/min
Weight	250 kg

Air Hydraulic Twin Ram Pit Jack

Air hydraulic twin ram pit jack, with an automatic mechanical safety lock.

2 individually controlled rams offer safe and balanced lifting. The mechanical safety locks offers maximum operator safety against unintentional lowering. Rapid and precise air hydraulic unit with high speed ram travel.

Simple modern design with control panel at ergonomical working height, transversely sliding rams. Can be made to fit all pits due to its adjustable frame. Comprehensive option range: cross beam, support bridge, etc.

Product of Denmark 🇩🇰



Tech Specs	GD200-2ML
Capacity	20T
Stroke	420mm
Min. Height	545mm
Max. Height	945 mm
Basewidth	590-1410 mm
Basedepth	650 mm
Lifting points*	200 - 1160 mm
Air Supply	8 - 10bar
Air Consumption	350 l/min
Weight	220 kg

Wheel Trolleys



WTA-500 commercial hydraulic wheel trolley

Ideal for use on vans, trucks and buses, the WTA-500 can lift up to 500kg, easily assisting with removal of wheels and brake drums. Flexible and durable, this heavy lifting unit makes manoeuvring around the workshop light work.

Product of Denmark 



Crane arm (pictured) is an optional accessory for WTA-500.


Tech Specs	WTA-500
Capacity	500 kg
Height	1,180 mm
Length	870 mm
Width	990 mm
Roller/ Fork Length	415 / 600 mm
Roller Distance	260 / 710 mm
Lifting Height	717mm
Wheel Size	Ø 270 - 1,300 mm
Weight	100 kg



WT-1500NT heavy duty mechanical wheel trolley

Ideal for use on tractors, agricultural and contractors' machinery, the WT-1500NT can easily lift up to 1.5t. It assists with the efficient removal of large wheels, as well as deep-treaded tractor tyres.

Flexible and durable, this heavy lifting unit makes manoeuvring big wheels around your workshop quick and simple.

Product of Denmark 

Tech Specs	WT-1500NT
Capacity	1.5T
Height	1,455 mm
Length	1,040 mm
Width	1625 - 2375 mm
Roller Length	690 mm
Roller Distance	900-1650 mm
Roller Diameter	Ø 80mm
Wheel Size	Ø 1,000 - 2,400 mm
Weight	300 kg
Handle for wheel rotation	Yes



Teknox Parts Washers

P120

Medium Automatic Parts Washer

P120 is the optimal system for the automatic washing of medium size mechanical parts. Washing is carried out by the action of upper, lower and side nozzles. Basket rotates through a gear motor, the switchboard is electromechanical. Operators can set the tank liquid temperature as well as the length of the treatment cycle.



Product of Italy

Tech Specs	P120
Load / Basket Capacity	300 Kg
Tank 1 Capacity	270 lt
Pump 1	1,5 kW 2.5 bar 200 lt/min
High Pressure Pump 1	3,0 kW 6 bar 250 lt/min
Heating Tank 1	8 kW
Motor For Parts rotation	0,09 kW
Steam Exhauster	0,25 kW 320 Nmc/h
Disk Oil Separator	0,09 kW
Compressed Air Blowing	150 Nmc/h @ 4 bar
Tank Emptying Pump	0,37 kW
Power Supply	415V 3PH

Mobile Oil Lubrication Skid



Product of Australia

Simplifies the fluid dispensing, capture and disposal for your mobile servicing units

- 3 x 130L New Oil Compartments and 1 x 380L Waste Oil Compartment.
- 3 x Oil Pumps for fluid dispensing which supply the oil reel and dispense gun.
- Waste Oil Diaphragm Pump and Reel to eliminate handling of any fluids.
- Forklift skid for ease of loading and unloading from utes, trucks or trailers.
- Made of high grade, quality steel construction and powder coated for durability

Perfect for mobile servicing, this unit comes complete with pumps, hose reels and fluid metering for easy set up.

Compliant with Australian Standards AS1692.2006, this versatile unit comes in standard sizing, or you can customise to suit your needs based on space available and storage volume required.

Oil Tanks & Lubrication Equipment

Bulk Storage Oil Tanks

Bulk Servicing Fluid Storage Tanks

Levanta's bulk oil tank systems are safe, efficient and customisable for effective fluid dispensing and storage requirements, all in one complete package.

- Standard sizing available (500L to 10,000L)
- Effective fluid dispensing
- Suitable for fluid storage

Product of Australia 



LWS023-1969-008

'T-Style' Hose Reel Gantry suit 8 Reels

- Pre-Drilled Holes to suit Levanta Hose Reels
- Drip Trays under reels
- Hidden compartment for hose entry/egress
- *also available to suit 4 Reels



LWS023-1964-000

'H-Style' Hose Reel Gantry suit 6 Reels

- Pre-Drilled Holes to suit Levanta Hose Reels
- Drip Tray under reels
- Shelf on base for storage or small containers / lubricants
- *also available to suit 4 Reels or 9 Reels



LWS020-1180-000

5:1 Mod.805 Air Operated Oil Pump

- Delivery capacity 35 l/min.
- For wall-fixing or fixed positions. With different accessories it allows alternative possibilities of application.
- Polyurethane seals
- Threaded ring for drum connection.



LWS029-1374-000

3:1 Air Operated Coolant Stub Pump

- Stainless steel air operated Coolant pump
- 3:1 delivery capacity with 30 L/min
- For wall fixing or fixed positions
- Comes with threaded ring for drum applications



LWS028 A110-AB1

3/4" Air-operated Double Diaphragm Pump

- Compression ratio: 1:1
- Max flow-rate: 110 l/min
- Fluid connections: 3/4" BSP
- *optional wall bracket available



LWS028-A170-AB1

1" Air-Operated Double Diaphragm Pump

- Compression ratio: 1:1
- Max flow-rate: 170 l/min
- Fluid connections: 1" BSP
- *optional wall bracket available



LWS024-1243-A00

Digitally Metered Oil Gun


- 90°Flexible end
- F 1/2" swivel connection
- Manual drop valve Ø 12 mm
- Equipped with Calibration feature



LWS024-1237-A00

Digital Oil Gun

- Oil digital flow meter
- Rubber protection
- Handle with F 1/2" swivel joint
- Flexible hose
- Manual non-drip tip

Product of Italy 



LWS070-1307-315
15m 3/8" Grease Reel

- Inlet M3/8"
- Outlet M1/4"
- Galvanized connections
- Adjustable Arm & Hose Stop



LWS070-1306-415
15m 1/2" Oil Reel

- Inlet M1/2"
- Outlet M1/2"
- Galvanized connections
- Adjustable Arm & Hose Stop



LWS013-1102-000
Grease Pump Kit with Handle 18-30kg

- 60:1 Air-Operated Grease Pump with Handle
- Lid & Follower Plates
- 3m 1/4" Hose with flexible swivel Grease Gun



LWS070-1302-415
15m 1/2" Air/Water Reel

- Inlet M1/2"
- Outlet M1/2"
- Galvanized connections
- Adjustable Arm & Hose Stop



LWS011-0950-094
Grease pump kit

- 50:1 ratio
- For grease drums 180-220kg
- Shank length 940mm
- For high viscosity grease
- Includes LWS014-1056-045 lid
- Includes LWS014-1066-045 follower plate



LWS022-1896-000
IBC 1000L Oil Dispensing Kit

- 3:1 Mod.605 Air-Operated Pump 30L/m
- Pressure regulator with filter, lubricator and gauge
- Brackets & Drip Tray
- 10m 1/2" Hose Reel
- Metered Dispensing Gun



LWS013-1121-000

Grease Drum Trolley Kit 180-220kg

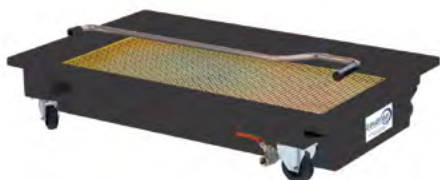
- 60:1 Air-Operated Grease Pump
- 600mm Lid
- 5m 1/4" Hose with flexible swivel Grease Gun



LWS022-1298-E00

Oil Drum Trolley Kit 180-220L

- 5:1 Ratio Mod.605 Air-Operated Pump 28L/m
- 10m 1/2" Hose Reel Mounted on Trolley
- Metered Dispensing Gun



LWS047-1459-G00

Waste Drainer, Low Level 120L

- Grate on the base of the tank
- Grate for draining substituted oil filters
- F 3/4" G exhaust ball valve
- *also available in 60L



LWS047-1459-GP0

Waste Drainer, Low Level 120L with pump

- Grate on the base of the tank
- Grate for draining substituted oil filters
- F 3/4" G exhaust ball valve



LWS046-1457-000

90L Waste Oil Pit Drainer

- Tank capacity 90 litre
- Breakwater grate on the base of the tank
- Breakwater Grate for drip the substituted oil filters
- Adjustable wheeled supports [min 800 - max 1,200mm]
- F 3/4" exhaust ball valve



LWS045-1460-000

Upright Waste Drainer & Basin 90L

- Grate for draining substituted oil filters
- For use under light & heavy vehicle hoists
- Pneumatic air emptying (max pressure 0,5 bar)
- Can also be set up for suction emptying

Roller Brake Testers

BM14200 In-Ground Roller Brake Tester

The BM14200 is a strong in-ground brake tester for light and heavy vehicles with an axle load up to 20t and is designed for workshop and vehicle inspection applications. The system has some great features including:

- Simple guided test
- Accurate and repeatable measurements of key items
- Complies to the Australian Standards
- Tests accepted by all Australian State Governments
- Test a wide range of vehicles
- Automatic axle weighing
- Tablet PC Control
- All tests saved to database
- 24-month warranty of parts and labour
- Optional axle load simulation and air pressure testing

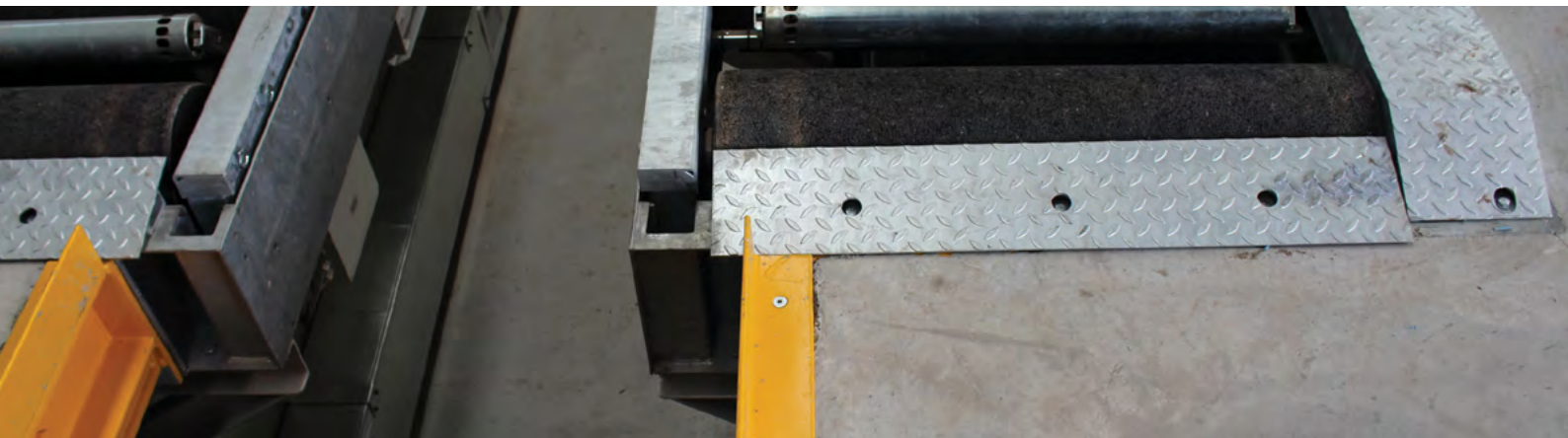
The BM14200 is the result of over 40 years of development and is the mainstay of many vehicle test stations around the world including Australia, the UK and New Zealand.

The advanced roller surface is aimed at maximising roller life and maintaining the correct co-efficient of friction to match the road surface. As standard the BM14200 is supplied with hot galvanised sub-frames, which are concreted into the ground before the actual brake tester is installed. All other metal surfaces are galvanised too, this provides you with a long service life from your investment.



Tech Specs	BM14200
Roller Bed standard L x W x H	3320 x 990 x 622 mm
Roller Bed per side L x W x H	990 x 1355 / 1,605 x 300 mm
Roller Diameter	260mm
Roller Length	1,000 mm as standard
Distance Between Roller Centres	493mm
Maximum Test Axle Weight	20,000 kg
Gear Motor Size	11 kW as standard
Power Requirement	415V 3PH 50A

Product of Denmark 





BM18200 In-Ground Lifting Bed Roller Brake Tester

The BM18200 is a roller brake tester suitable for both light and heavy vehicles. It features hydraulic lifting beds for load simulation. Each roller bed is lifted on 4 hydraulic cylinders and is controlled by software that has built-in safety features protecting the vehicle and operator during the brake test. The BM18200 can lift 16 Ton axle loads to an industry-leading height of 255 mm above floor level.

Product of Denmark 🇩🇰

Tech Specs	BM18200
Roller Bed Standard L x W x H	3302 x 1120 x 700 mm
Roller Bed per side L x W x H	1,315 x 1120 x 700 mm
Roller Diameter	208 mm
Roller Length	1,000 mm as standard
Distance between Roller Centres	450mm
Maximum Test Axle Weight	20,000 kg
Gear Motor Size	11 kW as standard
Power Requirement	415V 3PH 50A

Related Products



BM53000F

In-Ground Play Detector

The BM53000F in-ground play detector consists of a power unit and 2 heavy galvanised steel plates, driven by hydraulic rams. The powerful in-ground shakers can reveal even the smallest amount of play in a vehicle's suspension and steering components.



Axle Load Simulation

In addition to Levanta's range of Roller Brake Testers, BM has developed a number of different load simulation systems for heavy vehicles, ranging from conventional axle load simulation, to the unique chassis load simulation system (mm, adaptor and rack)



BM Flex-Check System

The BM Flex-Check system is a standard feature of all BM Roller Brake Tester machines, the BM Assist guide allows users to easily and efficiently test a multi-axle vehicle in a matter of minutes.

The supplied PC and Tablet allow for easy configuration and management of vehicles, as well as recording all completed tests. The database is searchable so you can recall every test for a specific vehicle or customer and re-print the results.

The tablet enables single-man operation, and is designed to be easily read and interpreted during the test. It displays a gauge with a double brake force scale from 0 – 8 kN and 0 to 40 kN. In addition to the Analogue gauges, the brake force is also displayed digitally. The tablet provides live display of weight, efficiency, imbalance, ovality and can also display a graph of brake force over time to give the user a visual indication of brake performance

BM20200 Mobile / Surface Mounted Roller Brake Tester

Heavy Duty and Durable Mobile Roller Brake Tester

The BM20200 roller brake tester offers a high standard of vehicle brake testing whilst being very mobile. This unit can be used in conjunction with the BM53000 mobile play detector, to create an on-ground heavy vehicle test lane. The BM20200 provides the same results as the BM 14200 In-Ground brake tester without the need to permanently install the equipment.

The advantage of the BM20200 is the design, which allows for the unit to be placed and used directly on the workshop floor for truck and bus inspections without any civil work. The low overall height makes it an ideal solution for low floor buses and other vehicles with low clearances. Simply fold down the drive on/ off ramps, plug in to power and turn on the computer. Starting from scratch it only takes one person 10 - 15 minutes to make the BM20200 operational.



Pictured: BM20200 Mobile Roller Brake Tester with BM53000 Mobile Play Detector

Product of Denmark 🇩🇰

Tech Specs	BM20200
Dimensions L x W x H	3465 x 4240 x 505 mm
Control Box	600 x 600 x 210 mm
Roller Diameter	150 mm
Roller Length	1000 mm
Distance between Roller Centres	430 mm
Max. Test Axle Weight	20,000 kg
Gear Motor Size	4.8 kW
Weight	1250 kg
Power Requirement	415V 3PH 20A

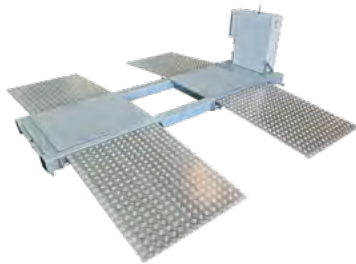


Related Products

BM53000M

Mobile Play Detector

The BM35000F in-ground play detector consists of a power unit and 2 heavy galvanised steel plates, driven by hydraulic rams. The powerful in-ground shakers can reveal even the smallest amount of play in a vehicle's suspension and steering components.



Axle Load Simulation (for BM20200)

In addition to Levanta's range of Roller Brake Testers, BM has developed a number of different load simulation systems for heavy vehicles, ranging from conventional axle load simulation, to the unique chassis load simulation system.mm, adaptor and rack]






BM65 Roller Brake Tester “All-In-One” Inspection Pit

Levanta’s BM65 is a unique, all-in-one solution for workshops looking for a brake tester, play detector with inspection capabilities but without the space or requirement to build a complete inspection pit in their workshop.

- Manufactured with hot galvanised steel and aluminium
- Incorporated brake tester and play detector
- 1000mm or 1250mm rollers
- Hydraulic lifting inspection floor (max lifting height 40cm) to assist with inspections.
- Integrated sump-tank for easy management of waste and avoidance of connection to trade waste.
- Lighting in the pit and optional external lighting
- Access via stairs on either LHS or RHS, depending on installation
- Installation directly on a sand-base without need for concreting
- Optional Hydraulic Aluminium cover with remote control



Product of Denmark 



Mobile Roller Brake Tester Trailer

Heavy Duty and Durable Mobile Roller Brake Tester

Custom built heavy duty 3.5ton brake tester trailer, built to suit the BM20200M 2.2KW mobile brake tester. Manufactured in Australia for Australian rough road terrain

- Full enclosed canopy for machine protection
- Hydraulic tilting trailer with heavy duty winch
- Dual axle
- Electric brake

Product of Australia 



Play Detectors

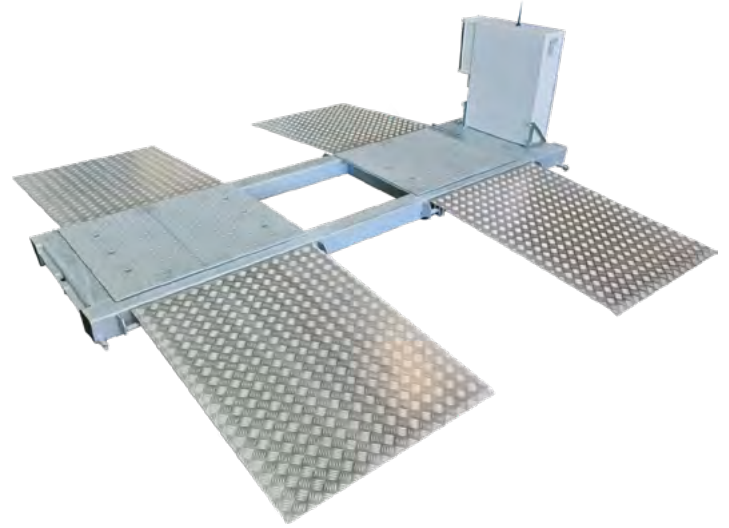
BM53000M Mobile Play Detector

The BM53000 mobile play detector consists of a power unit and 2 heavy galvanised steel plates, each of which are driven by 4 hydraulic rams.

This allows this powerful mobile play detector to reveal even the smallest amount of play in a vehicle's suspension and steering components - without causing any damage to the components.

- Can be easily paired with a BM20200 mobile roller brake tester to form the basis of a mobile test line by adding a set of joiner ramps
- BM53000 can also work stand alone and be positioned almost anywhere, even across a pit
- Powerful yet gentle 4 way hydraulic movement of the plates
- Can be used with both plates moving together and individual one-side-only operation to allow you to focus on potential problem areas
- Ergonomically designed wireless remote control with powerful LED torch

Product of Denmark 



BM53000F In-Ground Play Detector

The BM53000F in-ground play detector consists of a power unit and 2 heavy galvanised steel plates, each of which are driven by 4 hydraulic rams. This allows this powerful in-ground play detector to reveal even the smallest amount of play in a vehicle's suspension and steering components - without causing any damage to the components.

- Powerful yet gentle 4 way hydraulic movement of the plates
- Can be used with both plates moving together and individual one-side-only operation, to allow you to focus on potential problem areas
- Ergonomically designed wireless remote control with powerful LED torch

Product of Denmark 



Prefabricated Service Pits

Safety and efficiency for your heavy vehicle workshop

Levanta's prefabricated steel service pits come in standard sizing (10m to 35m) and manufactured from high quality steel.

An extraordinary level of craftsmanship and technology goes into the making of each prefabricated steel pit, ensuring a safe, comfortable area that will help increase the overall efficiency of your heavy vehicle workshop.

Our inspection pits provide an extremely safe, robust working environment. They also ensure that your employees have a clear view of the underside of all vehicles, and can reduce the risk of many work-related injuries.

Safe, efficient heavy vehicle service pits

Levanta's prefabricated pits offer you:

- Fast installation [can be installed in a five-day window]
- Minimal downtime to your existing workshop
- No costly formwork
- Number and length of pit bays to suit your needs

Levanta prefabricated steel vehicle pits feature:

- Pre-installed power, lighting, oil drainers, fluid supply, air, ventilation and drainage pumps
- Access stairs with handrails
- A range of different options for covering the pit to meet the very highest safety requirements
- A painted finish to extend the life of your pit

Product of Australia



Advanced pit jacking system

Levanta prefabricated service pits use advanced AC Hydraulic jacking systems.

With a 20T lifting capacity as standard, jacking beams offer you more flexibility for accessing different lifting points on vehicles, enabling your technicians to jack in the centre of the pit if required.

A single jacking beam can service any length pit, doing away with the need to install multiple jacks. Technicians only need to push one carriage up and down the pit instead of positioning two jacks [one on each side].

Levanta's full service solution



DESIGN & DRAFTING



A.S CERTIFICATION & COMPLIANCE



INSTALLATION & FITOUT



HANDOVER & SIGN OFF

Turnkey Workshop Fitouts

We understand your critical need for high utilisation and availability of your service bays. When you partner with Levanta, we work with you to achieve the maximum return on your investment. Our extensive experience with the Australian and New Zealand workshop industry enables us to offer you:

A full service vehicle workshop offering

With our in-house expertise in workshop fitout design, installation, and service, Levanta offer a true end-to-end approach for both heavy and light vehicle manufacturers, service providers, and associated businesses.

Importantly, we begin a project by consulting with you as our client to develop a superior solution that's tailored to the particular needs of your business.

Our team have the experience to listen to and understand your requirements, developing a customised turnkey solution and delivering exactly what we promise.

Specialists through our "Turnkey" offering in:

- Detailed design layout
- Project management
- Installation of equipment
- Compressors and compressed air pipework
- Oil tanks, guns and pipework
- Aftersales maintenance and support

In-house consultancy & design services

The Levanta team's extensive experience and technical knowledge help ensure the smooth running of any project.

We maintain in-house services including design, consultancy, sales, installation, and repairs - which means we maintain complete accountability for the solutions we provide.

We'll work with you to design a workshop that works; improving your layout, fitting in more service bays, and increasing and improving workflow.



We've helped over **1000** heavy vehicle workshops in Australia & New Zealand with their workshop equipment and setup.

Your turnkey **workshop** and fitout partner



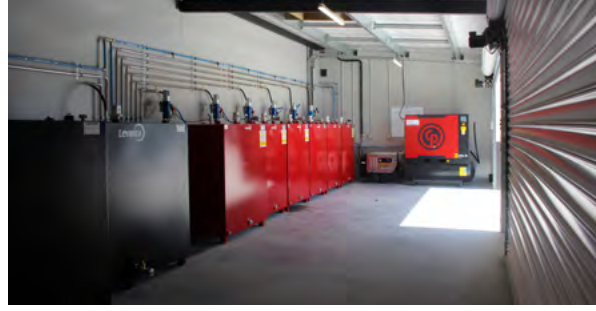
Utilising New Zealand's largest range of premium workshop equipment we can provide a full "Turnkey" package allowing the best ROI on your investment.



As a successful business owner, you want the best quality products and the most cost effective fitout... on time and on budget.



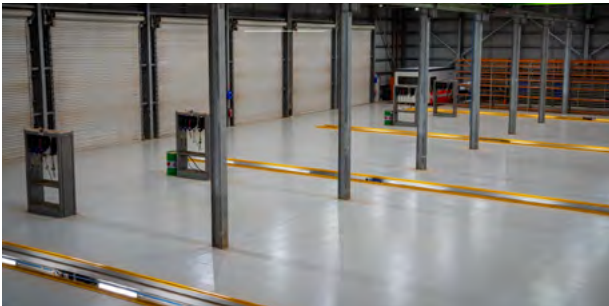
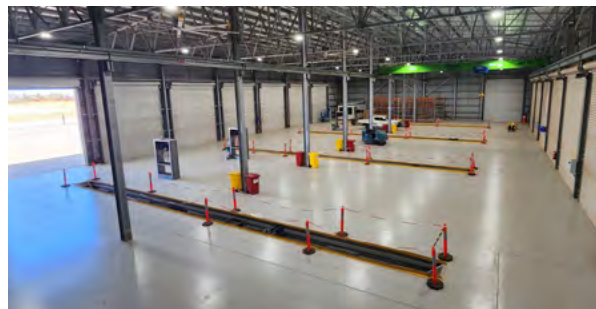
We can plan, design, project manage and fitout your workshop space for optimum efficiency and profitability.



Penske
CHRISTCHURCH



Daimler Trucks
BRISBANE



MGM Bulk
PORT HEDLAND

AUSTRALIA



LEVANTA WORKSHOP SOLUTIONS

09 889 6545

www.levanta.co.nz

customerservice@levanta.co.nz

NEW ZEALAND

